

State of Rhode Island and Providence Plantations

Fiscal Year 2019 Budget



Volume IV – Public Safety, Natural Resources
and Transportation

Gina M. Raimondo, Governor

Agency Summary

RHODE ISLAND EMERGENCY MANAGEMENT AGENCY

Agency Mission

The mission of the Rhode Island Emergency Management Agency (RIEMA) is to reduce the loss of life and property for both natural and man-made incidents by utilizing an all hazards approach to prevention, protection, mitigation, response, and recovery while providing leadership, assistance, and support to regional, state, and local entities.

Agency Description

RIEMA is responsible for establishing, sustaining and coordinating the resources of the Federal, State, local governments, non-governmental organizations and the private sector to effectively meet the challenges faced during a natural and/or man-made incident. This will be accomplished by the Executive Director through the Governor's authority under R.I.G.L 30-15. The organization's primary goal is to create and oversee a statewide system with an all hazards approach to emergency management and homeland security. RIEMA is also responsible to strengthen the thirty-one (31) core capabilities outlined by the National Preparedness Goal as established by Presidential Policy Directive 8 to reduce loss of life and property within the State of Rhode Island during natural and/or man-made incidents. The Rhode Island Emergency Management Agency and the State Emergency Operation Center (SEOC) will provide a central location from which all state government at any level can provide interagency coordination and executive decision-making in support of any regional incident or local response. This will be done by: information collection and evaluation, executive decision-making, priority setting, management, coordination & tracking of resources, and interoperable communication facilitation to support any overall response efforts.

Statutory History

R.I.G.L 30-15 created the Emergency Management function. In 1973, the Rhode Island Defense Civil Preparedness Agency was created by R.I.G.L. 30-15, to replace the former Civil Defense Agency. Executive Order No. 83-5 changed the official name to the Rhode Island Emergency Management Agency. The 2015 Legislature established RIEMA as a stand-alone agency. The 2015 Legislature established RIEMA as a stand-alone agency.

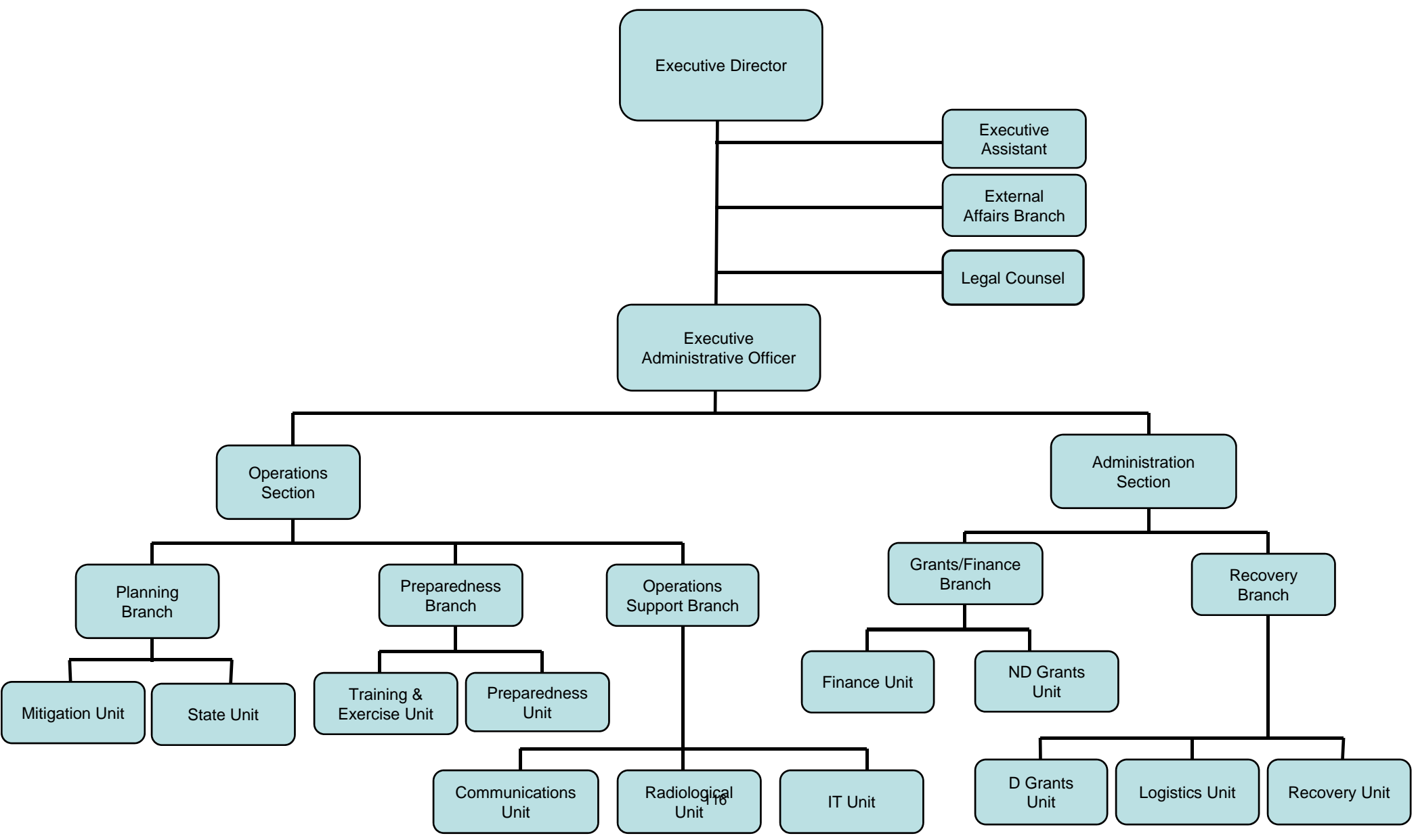
Budget

RHODE ISLAND EMERGENCY MANAGEMENT AGENCY

	2016 Actuals	2017 Actuals	2018 Enacted Budget	2018 Revised Budget	2019 Recommended
Expenditures by Program					
Central Management	18,635,772	15,729,042	18,454,652	19,182,981	20,390,187
Total Expenditures	18,635,772	15,729,042	18,454,652	19,182,981	20,390,187
Expenditures by Object					
Salary And Benefits	2,732,499	2,562,198	3,416,526	3,271,009	3,628,925
Contract Professional Services	552,490	1,023,508	870,006	870,006	386,487
Operating Supplies And Expenses	4,649,179	3,885,716	2,980,716	3,164,812	5,351,925
Assistance And Grants	9,008,053	5,988,314	9,132,990	9,632,990	7,033,436
Subtotal: Operating	16,942,221	13,459,736	16,400,238	16,938,817	16,400,773
Capital Purchases And Equipment	1,693,551	685,894	2,054,414	2,244,164	3,989,414
Debt Service (fixed Charges)	0	1,494,415	0	0	0
Operating Transfers	0	88,997	0	0	0
Subtotal: Other	1,693,551	2,269,306	2,054,414	2,244,164	3,989,414
Total Expenditures	18,635,772	15,729,042	18,454,652	19,182,981	20,390,187
Expenditures by Source of Funds					
General Revenue	1,762,456	1,847,848	1,734,470	1,917,262	2,108,891
Federal Funds	16,741,641	12,200,391	14,775,673	15,132,473	16,335,897
Restricted Receipts	131,675	186,389	450,095	449,082	450,985
Operating Transfers From Other Funds	0	1,494,415	1,494,414	1,684,164	1,494,414
Total Expenditures	18,635,772	15,729,042	18,454,652	19,182,981	20,390,187
FTE Authorization	32.0	29.0	32.0	32.0	32.0

The Agency

State of Rhode Island Emergency Management Agency



Performance Measures

RHODE ISLAND EMERGENCY MANAGEMENT AGENCY

Emergency Management Accreditation Program (EMAP) Standards Achieved

The Rhode Island Emergency Management Agency (RIEMA) must meet 64 standards to become nationally accredited by the EMAP. Achieving national standards will lead to safer and more resilient communities. The figures below represent the number of EMAP standards achieved. [Note: Missing values appear as zeros in the measure.]

	<i>Reporting Period: Calendar Year</i>				
	2015	2016	2017	2018	2019
Target	0.00	32.00	64.00	64.00	64.00
Actual	0.00	22.00	64.00	0.00	

StormReady Communities

The National Weather Service StormReady program helps provide communities with the communication and safety skills needed to save lives and property before and during severe weather events. StormReady helps community leaders and emergency managers strengthen the coordinated state-wide response to weather emergencies. The figures below represent the number of cities and towns that have completed the StormReady program. [Note: Missing values appear as zeros in the measure.]

	<i>Reporting Period: Calendar Year</i>				
	2015	2016	2017	2018	2019
Target	5.00	39.00	39.00	39.00	39.00
Actual	5.00	19.00	39.00	0.00	

CodeRED Communities

The CodeRED high speed community and emergency notification system helps local and state leaders send time-critical emergency messages needed to save lives and preserve property before and during severe weather events. CodeRED helps state-wide coordination of disaster efforts between local and state agencies. The figures below represent the number of cities and towns that have enrolled in the CodeRED system. [Note: Missing values appear as zeros in the measure.]

	<i>Reporting Period: Calendar Year</i>				
	2015	2016	2017	2018	2019
Target	20.00	39.00	39.00	39.00	39.00
Actual	20.00	39.00	39.00	0.00	

Personnel

Agency: RHODE ISLAND EMERGENCY MANAGEMENT AGENCY

Central Management

	FY 2018		FY 2019	
	FTE	Cost	FTE	Cost
Classified				
ASSISTANT ADMINISTRATOR- FINANCIAL MANAGEMENT	1.0	93,966	1.0	93,496
ASSISTANT CHIEF OF PLANNING	1.0	91,601	0.0	0
CHIEF IMPLEMENTATION AIDE	1.0	58,185	1.0	58,185
COORDINATOR CIVIL PROTECTION RELOCATION	2.0	104,368	0.0	0
DEPUTY CHIEF OF LEGAL SERVICES	1.0	87,240	1.0	87,239
EMERGENCY MANAGEMENT COMMUNICATIONS TECHNICIAN	0.0	0	1.0	55,272
EMERGENCY MANAGEMENT PREPAREDNESS COORDINATOR	0.0	0	1.0	49,489
EMERGENCY MANAGEMENT SURVIVABLE CRISIS MANAGEMENT SPEC	1.0	52,764	1.0	52,763
FISCAL MANAGEMENT OFFICER	1.0	57,623	1.0	57,335
SUPERVISOR OF ADMINISTRATIVE & TECHNICAL SERVICES (EMA)	1.0	67,158	1.0	67,157
Subtotal Classified	9.0	612,905	8.0	520,936
Unclassified				
EMERGENCY MANAGEMENT COMMUNICATIONS TECHNICIAN	2.0	111,361	1.0	56,089
EMERGENCY MANAGEMENT CRISIS INFO MGMT SOFTWARE COORD	1.0	49,731	1.0	49,731
EMERGENCY MANAGEMENT CRITICAL INFRASTR/ KEY RESOURCES COORD	1.0	49,731	1.0	49,731
EMERGENCY MANAGEMENT CYBER SECURITY COORDINATOR	1.0	49,731	1.0	49,731
EMERGENCY MANAGEMENT EXECUTIVE ADMINISTRATOR	1.0	100,848	1.0	100,848
EMERGENCY MANAGEMENT EXTERNAL AFFAIRS COORDINATOR	1.0	49,792	1.0	49,792
EMERGENCY MANAGEMENT FINANCE & GRANTS BRANCH CHIEF	1.0	95,483	1.0	95,483
EMERGENCY MANAGEMENT GRANTS SUPERVISOR	1.0	62,603	1.0	62,603
EMERGENCY MANAGEMENT INFO SERVICES & WARNING OFFICER TECH	1.0	69,446	1.0	69,446
EMERGENCY MANAGEMENT LOGISTICS COORDINATOR	1.0	57,623	2.0	112,502
EMERGENCY MANAGEMENT OPERATIONS SECTION CHIEF	2.0	173,995	1.0	93,347
EMERGENCY MANAGEMENT OPERATIONS SUPPORT BRANCH CHIEF	0.0	0	1.0	86,360
EMERGENCY MANAGEMENT PLANNER	3.0	159,648	3.0	159,648
EMERGENCY MANAGEMENT PLANNING BRANCH CHIEF	1.0	81,212	1.0	81,212

Personnel

Agency: RHODE ISLAND EMERGENCY MANAGEMENT AGENCY

Central Management

	FY 2018		FY 2019	
	FTE	Cost	FTE	Cost
Unclassified				
EMERGENCY MANAGEMENT PREPAREDNESS BRANCH CHIEF	1.0	86,360	1.0	80,651
EMERGENCY MANAGEMENT RADIOLOGICAL SUPERVISOR	1.0	70,216	1.0	70,215
EMERGENCY MANAGEMENT RECOVERY BRANCH CHIEF	0.0	0	1.0	91,601
EMERGENCY MANAGEMENT RECOVERY COORDINATOR	1.0	57,623	1.0	57,623
EMERGENCY MANAGEMENT RECOVERY SUPERVISOR	1.0	80,140	1.0	80,140
EMERGENCY MANAGEMENT TRAINING SUPERVISOR	1.0	79,899	1.0	79,899
EXECUTIVE DIRECTOR	1.0	141,259	1.0	141,259
Subtotal Unclassified	23.0	1,626,701	24.0	1,717,910
Subtotal	32.0	2,239,606	32.0	2,238,846
Overtime (1.5)		27,500		37,600
Turnover		(306,683)		0
Total Salaries		1,960,423		2,276,444
Benefits				
FICA		157,502		171,279
Health Benefits		375,581		325,304
Payroll Accrual		13,720		12,858
Retiree Health		127,610		133,886
Retirement		536,767		606,171
Subtotal		1,211,180		1,249,498
Total Salaries and Benefits	32.0	3,171,603	32.0	3,525,942
Cost Per FTE Position (Excluding Temp. and Seasonal)		99,113		110,237.36
Statewide Benefit Assessment		98,905		102,983
Payroll Costs	32.0	3,270,508	32.0	3,628,925
Purchased Services				
Buildings and Ground Maintenance		0		2,550
Clerical and Temporary Services		770,006		260,937
Management & Consultant Services		100,000		100,000
Other Contracts		0		1,125
Training and Educational Services		0		21,875
Subtotal		870,006		386,487

Personnel

Agency: RHODE ISLAND EMERGENCY MANAGEMENT AGENCY

Central Management

	FY 2018		FY 2019	
	FTE	Cost	FTE	Cost
Total Personnel	32.0	4,140,514	32.0	4,015,412
Distribution by Source of Funds				
General Revenue		498,060		602,947
Federal Funds		3,390,092		3,158,200
Restricted Receipts		252,362		254,265
Total All Funds		4,140,514		4,015,412
